



Intelligently
balance traffic
between
cells/bands

Executive Summary

This case study focuses on a US tier 1 wireless carrier's trial of Aglocell Maximizer algorithms in their communication network. The case study demonstrated how to unlock underutilized mobile capacity by optimizing traffic distribution and inter-frequency handovers in a US tier 1 wireless carrier's network. Aglocell's Layer Maximizer calculated a more effective baseline for handover parameters. This enabled real-time network management



and optimization systems to do an even better job. The case study documents how Aglocell created significant capacity and throughput improvements as well as opportunities for capex savings. The case study explored the implementation of Aglocell's Layer Maximizer algorithms in a Radio Access Network (RAN) to intelligently balance traffic between cells/bands improving PRB utilization.

Key findings include:

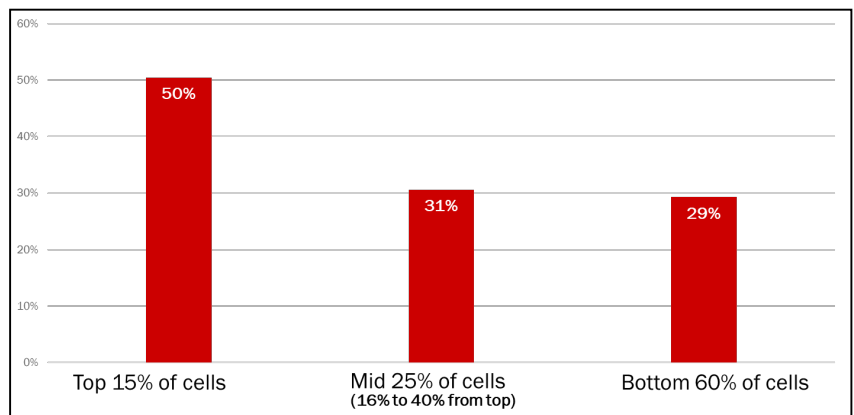
1. Identified very unbalanced data volume distribution between cells/bands, with 15% of cells carried 50% of the data volume. In addition, the bottom 60% of cells only carried 29% of the data volume.
2. The application of Aglocell algorithms led to significant rebalancing of data volume. The most loaded cells data volume reduced by 9%. This was achieved through refined RF tuning and adjustments in layer management parameters.
3. Notably, these algorithms boosted the utilization of the mid band cells by 12.5% which was the most loaded band. The increase in utilization reversed cells from triggering for carrier adds reducing RAN expansion capex costs.

Challenges

Wireless carriers compete in a very capital-intensive industry that has become more and more challenging as interest rates have risen dramatically. The rapid increase in mobile data demand has led to the non-stop expansion of wireless networks, particularly by adding additional capacity at existing macro sites by adding carriers. This continual increase in data volume requires additional expansion capex to maintain service levels before any new technologies can be deployed..

Algorithm Functionality

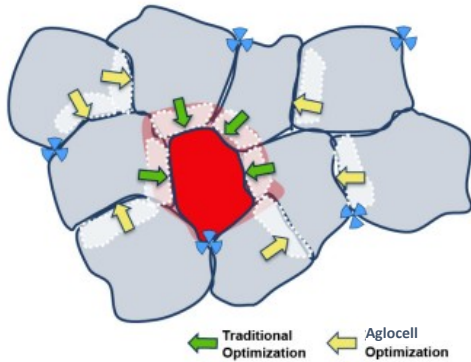
Unlike existing tools, Aglocell considers both signal and load conditions, as well as their combined effect on throughput across all frequencies and cells in a single mobile network. Working in the cloud and without direct integration into MNO's network data streams, the solution conducts millions of "what-if" comparisons, the solution establishes the optimal combination of baseline settings for the handover parameters. Periodic parameter setting updates keep demand growth and network changes in check. Aglocell Layer Maximizer fills a previous gap in mobile network management, complementing existing systems and tools.



Data volume distribution was unbalanced across cells before Maximizers were implemented

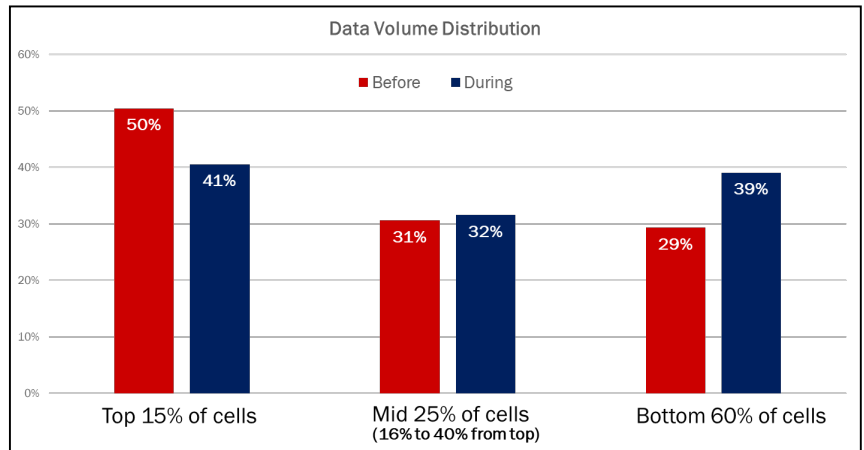
Current network management solutions only optimize select areas of a network at a time. Aglocell Layer Maximizer looks at the entire network and optimizes load across all deployed frequencies and cells. When a cell exceeds a load threshold, existing load balancing

solutions change handover parameter This reduces the size of the overloaded cell The adjacent cells must take over the load in the white dotted line areas in the image, if they can. SON and network management systems work one cell at a time and must find neighbors that have capacity.

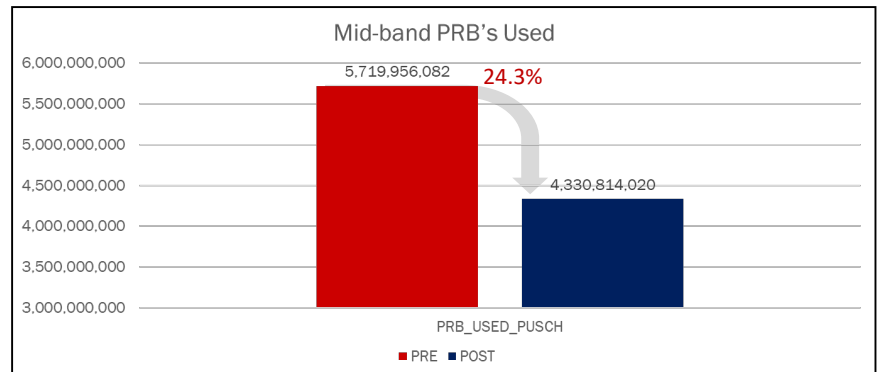


Aglocell’s Layer Maximizer optimizes globally across all cells and frequencies. It can, therefore, adapt all of them to harness all underutilized reserves. This is done by finding the right combination of standard 3GPP individual offset parameters for handovers. Together, these globally optimized parameters bring a dramatic improvement in capital efficiency and network performance by overcoming the limitations in traditional tools.

- No new hardware or costly implementation
- Best outcomes in dense urban areas
- Uses standard 3GPP handover



Data volume had more balanced distribution across cells after Maximizers were implemented resulting in improved utilization.



Aglocell Layer Maximizer algorithm benefits include:

- Reduces cost and improves user experience
- Optimizes network utilization and reduces overall network load
- Balances load and signal conditions in multiple frequency layers
- Immediate ROI impact

